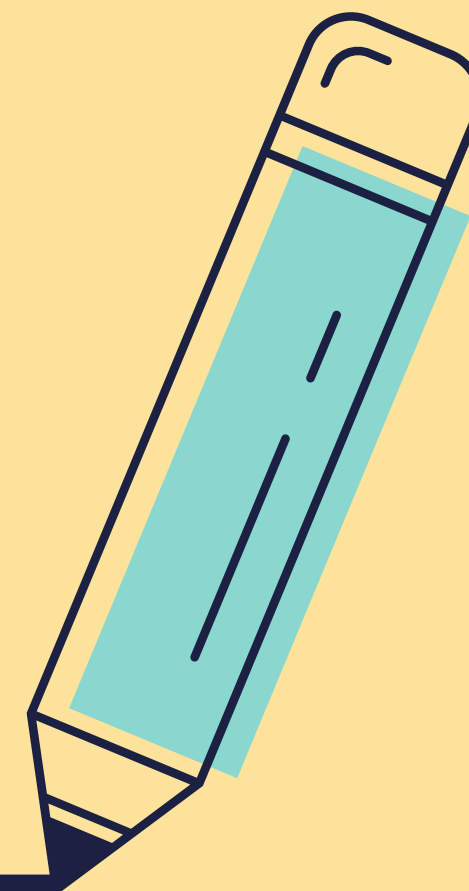


The logo for Whale Arts is located in the top left corner. It consists of a dark blue parallelogram containing the word "WHALEARTS" in a dark blue, sans-serif font. A small red dot is positioned above the letter 'S'. The background of the top left corner features a pattern of vertical light blue lines of varying heights.

WHALEARTS

CLING FILM TEXTURE TECHNIQUE



WHAT YOU'LL NEED

PAPER

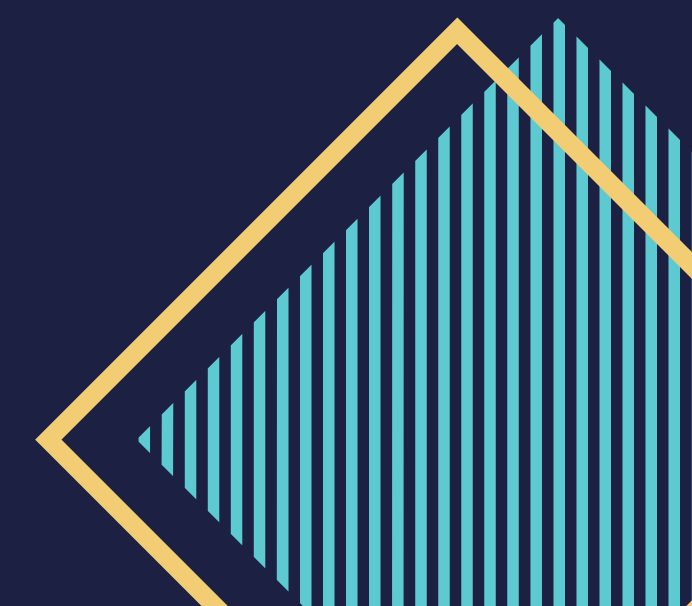
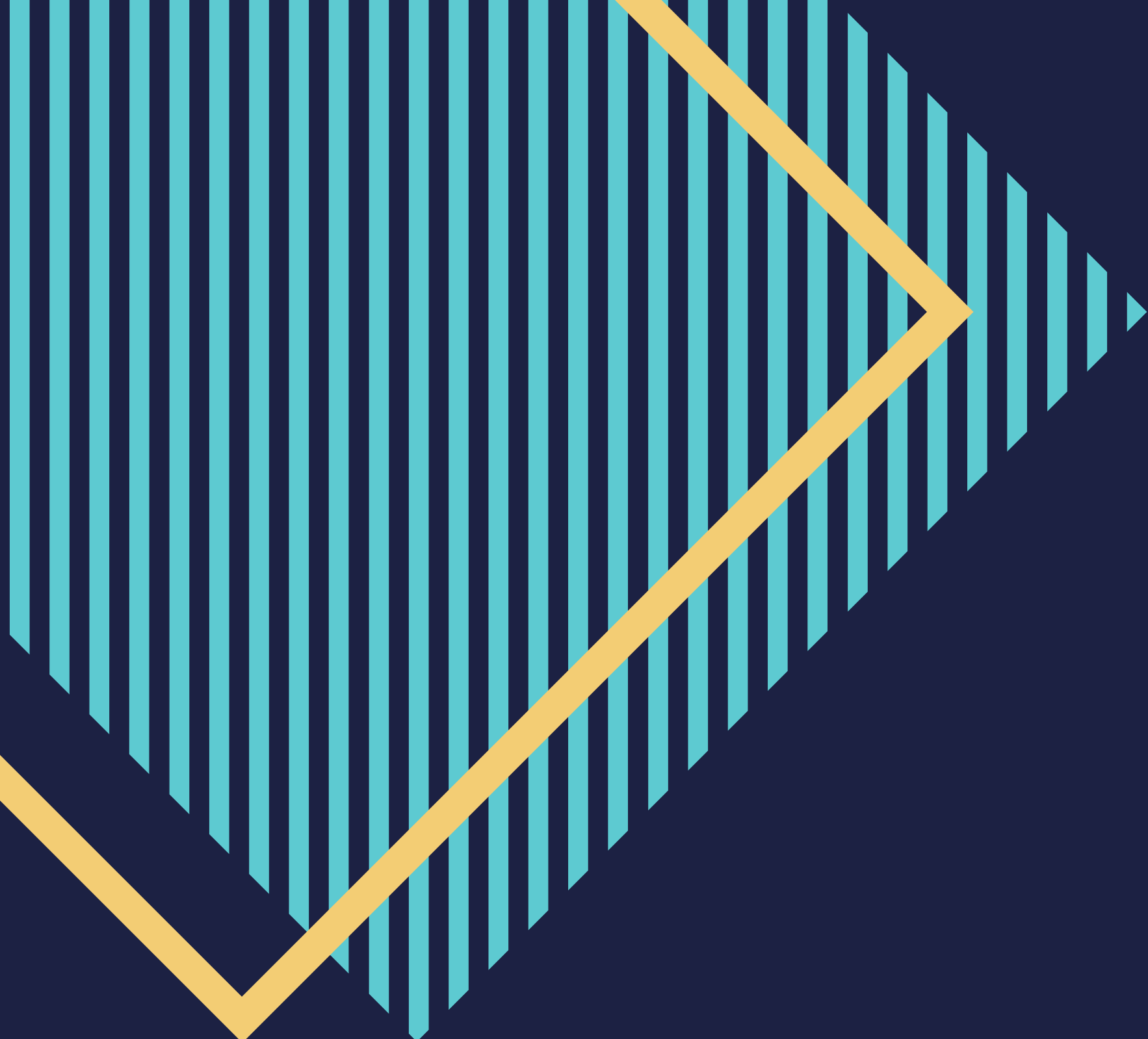
PAINTS

WATER

CLING FILM

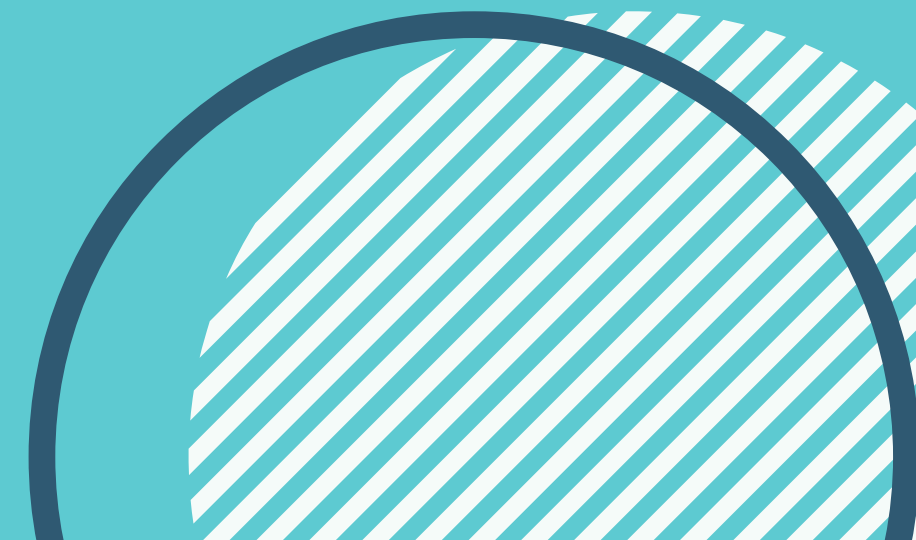
PAINT BRUSH

TAPE



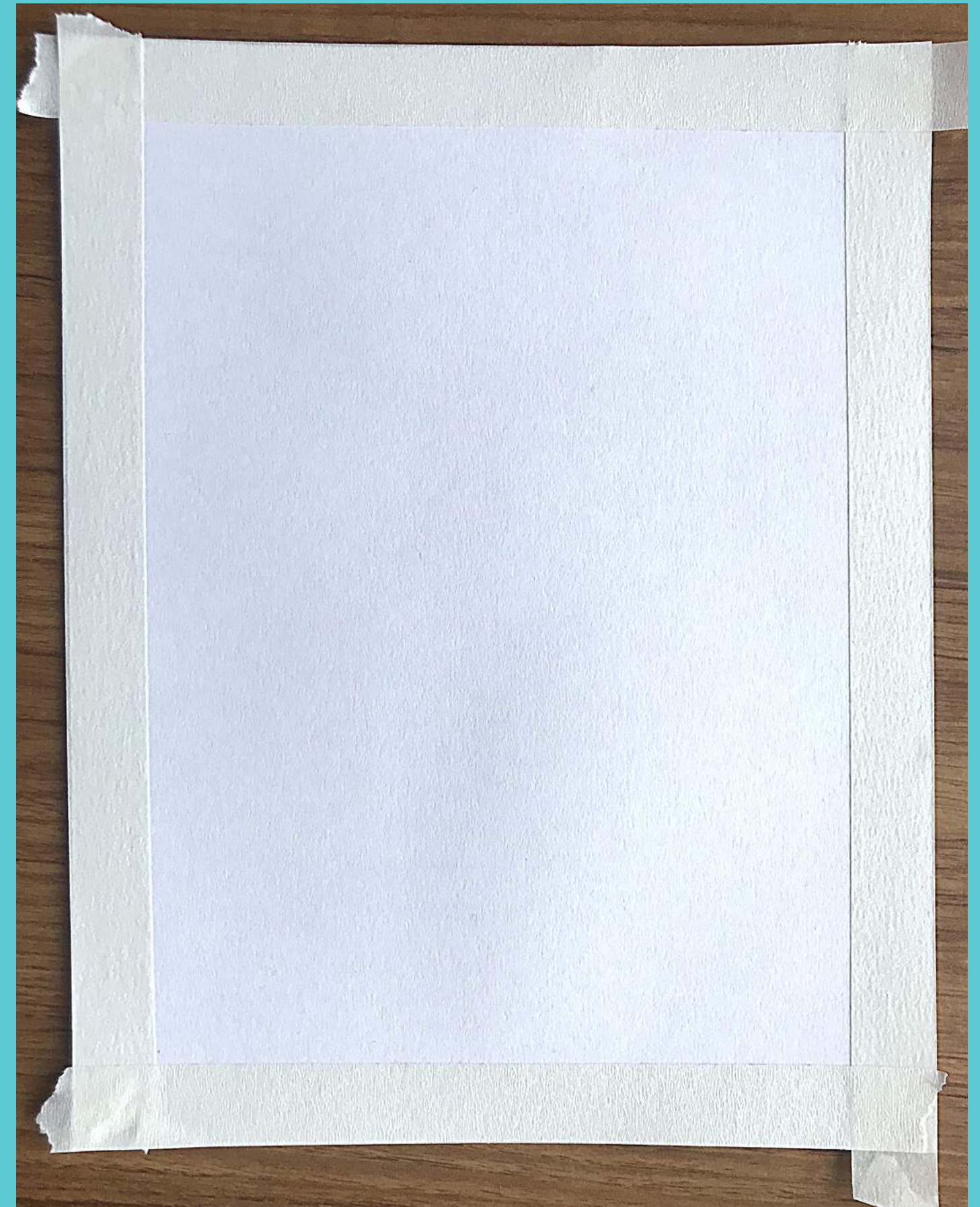
WHAT IS THE CLING FILM TEXTURE PAINTING TECHNIQUE?

By placing cling film over wet paint and letting it dry, a fabulous texture appears once the cling film is removed. You can then use this as a background or a base for a painting, collage or other creative design. The finished technique looks a lot like water to me, so I'm going to do an underwater scene.



STEP 1:

Prep your page. I love using tape borders because when you finish your image and peel off the tape it really makes it pop!



STEP 2:

Mix your paint with some water to make it quite runny. I've chosen dark blue, white and a little bit of dark green, but you can choose whatever colours you like!

Once your paints are runny enough, flood your page with paint. This means fill the entire page with lots and lots of paint using all the colours you like.





KEEP PAINTING UNTIL THE PAGE IS FULL OF COLOUR...

STEP 3:

Once you've filled your entire page with paint, place the cling film over the paint and scrunch it a little. Now you've got to wait for it to dry!





STEP 4:

Now, once it's dry, peel off the cling film. You'll see the texture the cling film has added. I'm going to turn this into an underwater scene, so next I'm going to paint in a whale and some bubbles.



NOW PEEL OFF THE TAPE...



TA-DA!

Turn to the next page for close up picture of the detail of the texture technique.



